

Partition Manager 8.5

Manage your Partitions with Ease and Confidence!

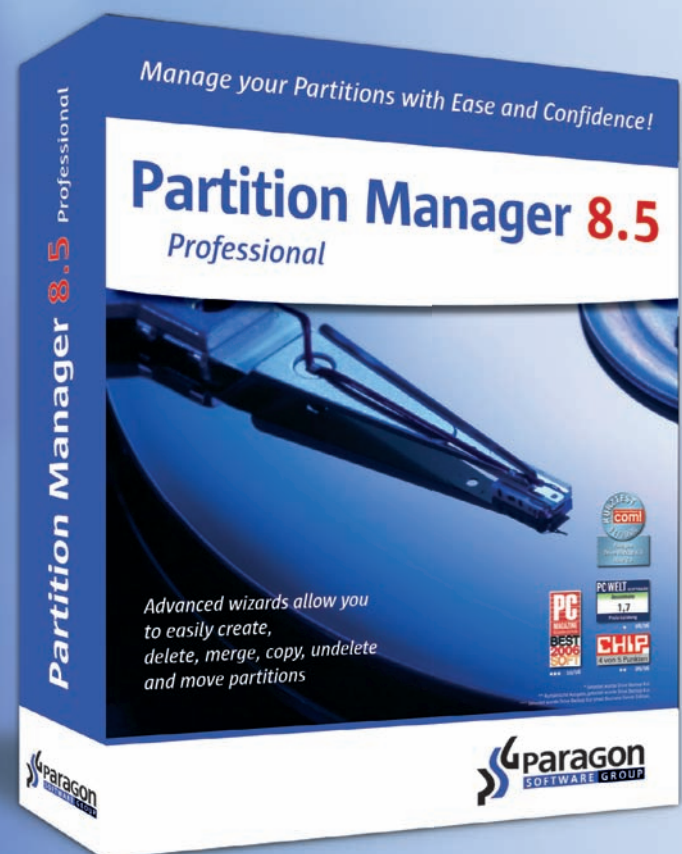
Keyfeatures

- Boot Manager
- Advanced wizards allow you to easily create, delete, merge, copy, undelete and move partitions
- A disk structure diagram displays actual and planned partition allocation
- Task List manages scheduled and completed tasks
- Automatic Shutdown after completed tasks
- Volume Explorer enables the browsing of, and access to files on any supported file system
- Safe partition conversion to and from: FAT16, FAT32 and NTFS
- Powerful Recovery CD includes all of the necessary recovery tools
- Corrects file system errors
- Dynamic Volume support (Professional and Server editions only)
- Full support for all CD/DVD formats
- Full range of server hardware supported, including all types of hard drives and the majority of SATA and RAID controllers

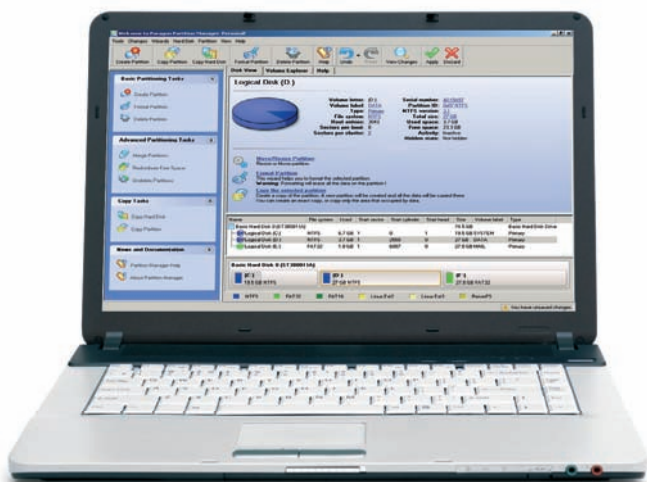
Paragon's Partition Manager is the tool for easy and reliable partition management. The intuitive user interface has been updated and together with the new and powerful features included in the new editions, you can perform the most complicated partition operations even if you do not consider yourself to be an expert.

The new **Professional, Server and Enterprise Server** editions incorporate helpful new features, which make the management of partitions as easy and as convenient as possible. Paragon has put a lot of effort into the new editions to produce an improved and Windows Vista compatible product range.

Edition	\$	€	£
Personal	49.95	39.95	25.95
Professional	99.95	79.95	54.95
Server	299.-	249.-	149.-
Server incl. Technician License	499.-	399.-	259.-
Enterprise Server (incl. Technician license and Gold Support)	999.-	799.-	529.-



Features	Pers.	Prof.	Server	Small B.B.
Boot Manager Setup Wizard	✓	✓	✓	✓
File System Integrity Check and Correction of File System Errors	✓	✓	✓	✓
Auto-Shutdown after Completing Operations	✓	✓	✓	✓
File System Performance Optimisation (Change Cluster Size, Defragment File System)	✓	✓	✓	✓
Support for Different Hardware (Large Hard Drives: IDE, SCSI, SATA, Firewire, USB etc.)	✓	✓	✓	✓
Virtual Mode	✓	✓	✓	✓
Partitioning Wizards	✓	✓	✓	✓
Copying Wizards	✓	✓	✓	✓
Recovery CD	Personal	Professional	Professional	Professional
Windows PE Recovery CD with File Transfer Wizard	Optional	Optional	✓	✓
Dynamic Disk Support (Format, Defrag, Check File System)	—	✓	✓	✓
Command Line Support and Script Generator	—	✓	✓	✓
Convert Dynamic Disks to Basic Disks	—	✓	✓	✓
Windows Server NT, Windows Server 2000, Windows Server 2003 support	—	—	✓	✓
Initial Backup and Restore Wizards	—	—	—	✓
Gold Support	—	—	—	✓
Restore with Shrink Function	—	—	—	✓
Hot Backup™ of Dynamic Volumes	—	—	—	✓



Userfriendly Interface - Paragon Partition Manager (Professional Version)

Features List

- Partition Manager runs under Windows Vista
- Create, format, delete, hide, resize and copy partitions and hard disks
- **Task List**
- **Wizard based interfaces:**
 - Create, format, delete and undelete partitions
 - Copy hard disks and partitions
 - Merge partitions
 - Redistribute free space
 - Boot Manager
 - Backup and Restore (Enterprise Server only)
- **HotCopy™ and HotResize** – copy or enlarge NTFS partitions without interrupting work
- **Data Loss Protection** – keeps data safe even with power supply failure
- Virtual Mode for all operations
- **Enhance and optimise your PC performance:**
 - Change cluster size for FAT16, FAT32, NTFS file systems
 - File system defragmentation, MFT defragmentation
 - File system error correction
- Support for NTFS file systems with compressed and encrypted files and folders
- Shrink/Compress MFT - optimises Master File Table on NTFS volumes. Make MFT smaller by removing empty records
- Supports SATA and RAID controllers
- Supports large hard disks
- **Volume Explorer** – similar to Windows Explorer – browse FAT, NTFS, Ext2 FS or Ext3 FS file systems and additionally access hidden and unmounted partitions
- **Recovery CD:**
 - Windows PE based Recovery CD (Server editions only)
 - Includes the program functions available in Windows and additionally offers full access to all FAT, FAT32, NTFS, Ext2 FS and Ext3 FS partitions on local hard drives
- **Integrated BootCorrector utility**

System Requirements

System: Windows 98, Windows XP Home/Professional, Windows 2000 Professional, Windows NT 4.0, Workstation Service Pack 4, Windows Vista, Windows XP Professional x64 (Professional Edition only)

Processor: Intel Pentium 233 MHz or higher

Memory: 128 MB ROM

HDD: 40 MB free space

Additional: CD/DVD drive



Paragon Technologie GmbH
 Heinrich-von-Stephan-Str. 5c
 79100 Freiburg, Germany
 Tel. +49 (0) 761/59 018 – 201
 Fax: +49 (0) 761/59 018 – 130

sales@paragon-software.com
www.paragon-software.com